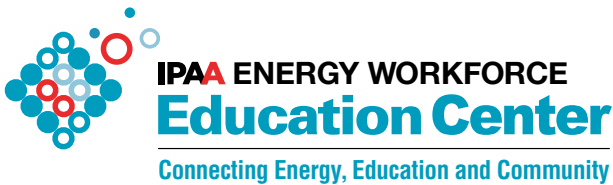


IPAA ENERGY WORKFORCE
Education Center

Connecting Energy, Education and Community





FROM OUR CO-CHAIRMEN

For over 15 years, the **IPAA Energy Workforce Education Center** has inspired students with enhanced STEM curriculum, preparing the next generation for successful careers in our industry. Through industry booms and busts, and most recently a pandemic, we continue to bring educational opportunities to students of all walks of life, and we need your support.

The **Education Center** promotes energy education outreach and early career development opportunities to diverse communities, to educate, inspire, and provide a pathway from middle school to employment and leadership in all energy sectors and seeks to introduce secondary education and college students to the energy industry and its many possibilities, while also cultivating the necessary skills for them to be successful throughout their careers.

The **Education Center** provides STEM, business, leadership development, soft skills, mentoring, and technical opportunities for secondary education and college students as well as educators interested in energy – from oil & natural gas to alternative energy – through competitions, guest speakers, externships, scholarships, and industry partnerships.

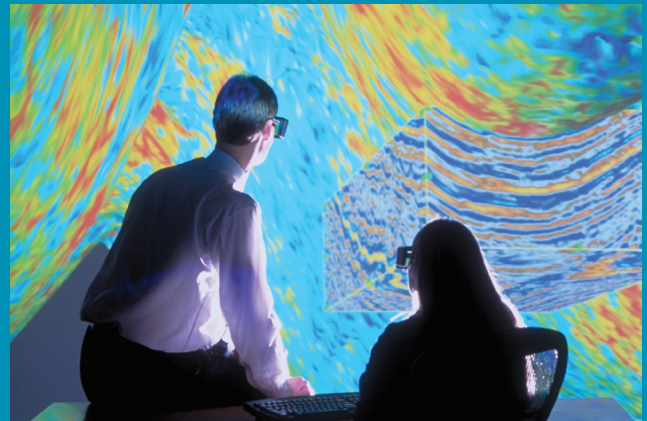
While 2020 and 2021 stressed our industry, it also brought much stress to educators and students as many classrooms went to a virtual learning format. We are focusing on supporting students and educators, and need your support now more than ever as we innovate to meet the challenges of the day.

I encourage you to read here about the **Education Center's** approach, and learn more in this brochure about our programs and how you and your company can get involved with the Center. If you have any questions, contact Anne Ford at aford@ipaa.org or 281.798.2334. We'd love to have you on board, so please do not hesitate to reach out.

Sincerely,

Barry Russell
President & CEO
IPAA

Galen Cobb
Energy Educators Chair
Vice President – Industry Relations
Halliburton



► APPROACH

Our all-inclusive approach encourages students to dream big by introducing them to current energy leaders while also providing the necessary tools, trainings, and programs along the way. While our programs are available to everyone, we believe that access should never be an issue which is why we choose to focus on serving economically disadvantaged and under-served communities.

We strive to continue building on our foundation of strong relationships with secondary education, colleges, industry associations, energy companies of all sizes, energy industry professionals and volunteers to reach a greater number of students.

Inspire young minds

80% of jobs this decade will require STEM skills, but only 40% of middle school students envision themselves with a STEM career.

Experiential learning

IPAA and Energy Workforce are seeking organizations to play a leading role in helping students explore STEM careers in a fun, impactful and innovative way.

Design your future

Empowering students with the knowledge of the incredible opportunities available in the energy sector with a STEM education.

The **IPAA Energy Workforce Education Center** supports energy education outreach by providing energy education in five broad areas:

- ❶ **High School Virtual Exploring Energy Program**
- ❷ **Middle School STEM Career Exploration Program**
- ❸ **Consulting Services** (national and international)
- ❹ Virtual and In-house **Oil & Gas Courses***
- ❺ Industry-focused **eLearning Online Courses***

*PROCEEDS BENEFIT THE EDUCATION CENTER



Energy Workforce & Technology Council President, Leslie Beyer with Education Center alumni and students.

► SNAPSHOT

- **41,000** total students impacted
- **238** total schools impacted
- Middle school STEM career exploration program offered to **57** Permian Basin counties
- **\$1+ million** in college scholarships awarded
- **41%** female participation
- **795** competitive externships awarded with **37** oil and gas companies
- Demographics reflect diversity of the school communities we serve:
 - **61%** Hispanic - **26%** Black
 - **8%** White - **3%** Asian
 - **Three-fourths** of students economically disadvantaged
- Significant impact on **first generation** college participation

History of Key Programs Developed and Implemented

Middle School Initiative

- STEM career exploration
- Teacher educational enrichment
- Parent portal

Field Experiences and Camps

- STEM and leadership camps
- Industry and college field trips

Guest Speakers

- Exploring energy careers
- Serving students and teachers
- Empowering industry volunteers

Competitions

- Team building
- STEM skills reinforcement
- Establishing a parent connection

Scholarships

- Encouraging higher education
- Serving economically disadvantaged youth

Industry Courses

Providing a variety of courses to those currently in the industry and those looking to learn more

- Virtual Courses
- In-house Courses
- eLearning Online Courses
- Public Courses
- Partnered with Energy Training Resources, LLC

Externships, Co-Op Programs, and College Internships

For Students

- Job-shadowing with scholarships
- Leadership development
- Resume preparation
- Job interviewing skills
- Business experience
- Exposure to energy economics
- Mentoring
- Professional presentations
- Building on parent connection
- Dale Carnegie Youth Leadership training
- Energy industry training
- Energy clubs

For Educators

- Dale Carnegie and industry training
- Job-shadowing with stipend
- Excellence Awards
- Financial incentives

Emerging Energy Leaders

- Alumni Group
- Supports mentoring

Consulting Services

Helping organizations start similar programs in their school districts/towns

What We Are Doing Currently

Permian-Based Middle School Career Exploration Program

www.ipaa.org/education/middle-school

National High School Virtual Exploring Energy Program

www.ipaa.org/education/exploring-energy

This school year, we are supporting educators and students with these two key programs:

► Secondary School Virtual Exploring Energy Program

Offered Nationally

Access for educators to a catalog of different energy, STEM and business-related topics which can be used on demand, as well as providing guest speakers and project mentoring. When students graduate from the Virtual Exploring Energy Program they can become members of IPAA's Emerging Leaders in Energy program.

Sponsors receive recognition on our event webpage, when we are promoting the program within the schools and throughout the community. Special recognition is available for higher level sponsors.



One Click to All of Our Energy Videos!

ENERGY TOURS

LEADERSHIP

ENERGY CAREERS

ENERGY TOPICS



VISIT US! www.ipaa.org/education/exploring-energy



2021 Virtual Exploring Energy prize recipients and certificate program participants.

► Middle School STEM Career Exploration Program

Offered in 57 counties in the Permian, west Texas and southeast New Mexico

Through a series of online interactive modules and quizzes students learn about the science, technology, engineering and math (STEM) that is all around them and, based on their interests and strengths, possible STEM careers in which they could excel. STEM career exploration cards provide students with sample projects, skills required, education and average salary. They also provide students with a roadmap of how to get there (i.e. classes to take now and down the road).

Sponsors receive recognition on our event webpage, when we are promoting the program within the schools and throughout the community.

Sample Middle School STEM Career Exploration Cards

Power Your Future

- **CAREER DESCRIPTION** Includes sections on **Sample Projects**, **Skills Required**, **Education**, and **Average Salary**
- **HOW TO GET THERE** Includes sections on **Starting Today**, **Classes to Take**, and **Down the Road**





Geologist

Geologists study the rocks, minerals, fossils, landforms, and the layers of the Earth's surface. They also study how and why the Earth has changed over time.

SAMPLE PROJECTS

Create a map that shows the rock types and land structures of an area. Use software to create a model of what the Earth is made of below the surface.

EDUCATION

Bachelor's or Master's Degree

SKILLS REQUIRED

 Analysis  Science  Writing

AVERAGE SALARY

\$89,780

STARTING TODAY

Create a map that shows the rock types and land structures of an area. Use software to create a model of what the Earth is made of below the surface

CLASSES TO TAKE

- Geology
- Chemistry
- Statistics

DOWN THE ROAD

Volunteer at a local organization or nature center that studies the land in your area.

You Can Make a Difference

► DONATE TODAY!

Corporate contributions have ranged between \$25,000 to \$250,000.
The IPAA Educational Foundation is a 501(c)(3).

CONTACT

Anne Ford, Senior Vice President
aford@ipaa.org
281.798.2234

MAIL TO | IPAA Educational Foundation

Attention: Anne Ford
1201 15th Street, NW, Suite 300
Washington, DC 20005

► VISIT www.ipaa.org/education



Since 2006, the IPAA Energy Workforce Education Center has inspired students in enhanced STEM curriculum, preparing the *next generation* for successful careers in the energy industry.

► THANK YOU TO OUR SUPPORTERS

There has been wide cross-section of industry support from companies and organizations including:



► STUDENTS SPEAK AT THE IPAA ENERGY WORKFORCE EDUCATION ADVISORY BOARD MEETING

Students who competed in the 2019 **Offshore Technology Conference (OTC) Energy Challenge** and placed second, shown here with IPAA President and CEO **Barry Russell**. These same students were also 2019 externs at **Equinor**, **ExxonMobil** and **Noble Energy**. Education Board Member **Paul Parsons**, with **Energy Training Resources, LLC**, worked alongside the students assisting with their preparation for the competition.

IPAA Energy Workforce Education Advisory Board

CO-CHAIRMEN



Barry Russell
President & CEO
IPAA



Galen Cobb
Energy Educators Chair
Vice President – Industry Relations
Halliburton



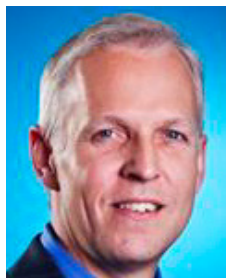
Annell Bay
Board Director
Apache Corporation



Upasana Bhatia
Tamar Asset Lead
Chevron



Earl Childress
Senior Vice
President Business
Development
Oceaneering



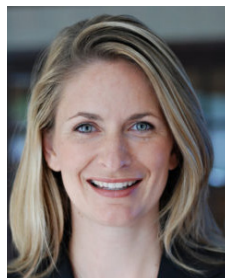
Aaron Cobb
Vice President
Commercial & Trading
ExxonMobil Fuels &
Lubricants Company



Zac Creach
Sales Executive
Americas
Rigzone



Molly Determan
Chief Operating Officer
Energy Workforce &
Technology Council



Alicia Dodge
Senior Land Advisor
Walter Oil & Gas
Corporation



Byron Dunn
CEO
Tubular Synergy
Group, LP



Patricia Edwards
Senior Vice President
& Chief Human
Resources Officer
EOG Resources



Jim Eisterhold
Retired
Newfield Exploration



Dr. Delesa Franklin
School Support Officer
Houston Independent
School District



Erica Frederick
Technology & Data
Science Manager
Southwestern Energy



James Geary
Manager, Exploration
US GOM
TotalEnergies E&P



Harris Ghazali
Managing Director
Lazard



Barry Glickman
President-Surface
TechnipFMC



**Paula McCann
Harris**
President, Petroleum
Club of Houston
CEO, DPM Energy



Kelsey Hulett
Director
Sales Operations
NOV Rig Systems



Bernadette Johnson
Vice President
Strategic Analytics
Enverus



Joy Jones
American Association
of Blacks in Energy;
Internal Controls
Specialist
EOG Resources



**Dr. Ramanan
Krishnamoorti**
Chief Energy Officer
University of Houston



Michael Linn
President
MCL Ventures LLC

IPAA Energy Workforce Education Advisory Board



Jeffrey Lund
Society of Independent
Professional Earth
Scientists, Public
Relations Chair & VP
Corridor Oil & Gas LP



Evelyn Medvin
Retired
Core Laboratories



Erik Milito
President
NOIA



Derrick Morgan
Senior Vice President,
Federal & Regulatory
Affairs, American
Fuel & Petrochemical
Manufacturers



Mark Papa
CEO & President
Centennial Resource
Development, Inc.



Paul Parsons
Managing Director
Energy Training
Resources, LLC



Jonathan Rhoads
Partner
Lowry Rhoads
Associates



John Royall
President & CEO
Gulf Energy
Information



Mark Rubin
CEO & Executive
Vice President
Society of Petroleum
Engineers



Trina Sadberry
Head of
Communications
Equinor



Kathleen A. Sauvé
Manager, Sustainability
and Stakeholder
Engagement, Marathon
Oil Company



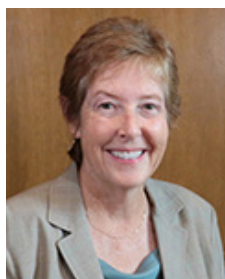
Sonia Scarselli
Vice President
Exploration and
Appraisal
BHP Petroleum



John Schlosser
President, Terminals
Kinder Morgan



Wesley Scott
Retired
Occidental Petroleum



Letha Slagle
Chair, Educational
Outreach Committee,
Houston Geological
Society, retired, Shell



Lane Sloan
President
Sloan Consulting
Services



Mary Spruill
Executive Director
National Energy
Education
Development Project



Nick Tran
Head of Community
& Veteran Affairs
Schlumberger



Jamie Vazquez
Investment Committee and
Advisory Board Member
Tanglewood Energy
Partners LLC



Elliot Wall
Account Manager
Core Laboratories



Bob Warren
Vice President
International
Association of Drilling
Contractors



Dave Wright
President & CEO
Dale Carnegie
Austin/Houston

NOT PICTURED:

Crystal Lovelady-Jackson
Workforce Development Advisor
Shell



IPAA ENERGY WORKFORCE
Education Center
Connecting Energy, Education and Community